



## Style 007RT

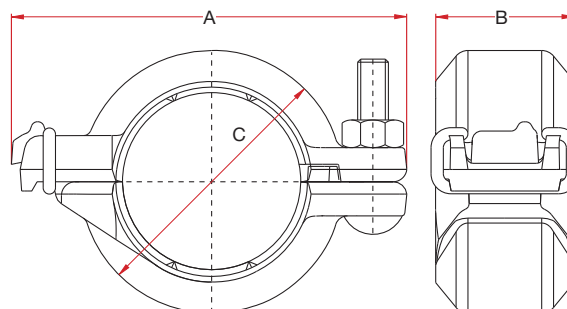


### QUIKHINGE® One Bolt Rigid Coupling



#### Features

- Unique one bolt coupling
- Provides rigid connection
- For general use (other than sprinkler systems) max. working pressure 300 psi. (20 bar).



	Nominal Size	Pipe Outside Dia.	Coupling Dimensions			No.	Bolts			Max. End Load ‡ Kg	Allow Pipe End Sep. §	Weight Kg.
			A	B	C		Size	x	Length			
inch	1¼	1.660	4 <sup>19</sup> / <sub>64</sub>	1 <sup>47</sup> / <sub>64</sub>	2 <sup>9</sup> / <sub>16</sub>	1	M10	x	51	230	0.04	0.52
mm	32	42.4	109.0	44.0	65.0						0-1	
inch	1½	1.900	4½	1 <sup>47</sup> / <sub>64</sub>	2 <sup>51</sup> / <sub>64</sub>	1	M10	x	51	299	0.04	0.58
mm	40	48.3	114.0	44.0	71.0						0-1	
inch	2	2.375	5 <sup>5</sup> / <sub>64</sub>	1 <sup>49</sup> / <sub>64</sub>	3 <sup>11</sup> / <sub>32</sub>	1	M10	x	51	466	0.04	0.73
mm	50	60.3	129.0	45.0	85.0						0-1	
inch	3 O.D.	3.000	5 <sup>45</sup> / <sub>64</sub>	1 <sup>49</sup> / <sub>64</sub>	3 <sup>13</sup> / <sub>16</sub>	1	M10	x	57	742	0.04	0.75
mm	65	76.1	145.0	45.0	97.0						0-1	
inch	3	3.500	6 <sup>17</sup> / <sub>32</sub>	1 <sup>53</sup> / <sub>64</sub>	4 <sup>29</sup> / <sub>64</sub>	1	M10	x	57	1,012	0.04	0.95
mm	80	88.9	166.0	46.5	113.0						0-1	
inch	4	4.500	7 <sup>51</sup> / <sub>64</sub>	1 <sup>13</sup> / <sub>16</sub>	5 <sup>51</sup> / <sub>64</sub>	1	M10	x	57	1,673	0.04	1.52
mm	100	114.3	198.0	46.0	147.0						0-1	
inch	5½ O.D.	5.500	9 <sup>39</sup> / <sub>64</sub>	1 <sup>31</sup> / <sub>32</sub>	6 <sup>49</sup> / <sub>64</sub>	1	M12	x	76	2,500	0.12	2.45
mm	125	139.7	244.0	50.0	172.0						0-3	
inch	6½ O.D.	6.500	10 <sup>45</sup> / <sub>64</sub>	1 <sup>31</sup> / <sub>32</sub>	7¾	1	M12	x	76	3,491	0.12	2.70
mm	150	165.1	272.0	50.0	197.0						0-3	
inch	6	6.625	10 <sup>45</sup> / <sub>64</sub>	1 <sup>31</sup> / <sub>32</sub>	7 <sup>59</sup> / <sub>64</sub>	1	M12	x	76	3,628	0.12	2.75
mm	150	168.3	272.0	50.0	201.0						0-3	

Suitable for dry pipe systems for temperature down to - 40°C.

► Note:

§ Figures indicating allowable pipe end separation refer to standard weight steel pipe with standard cut groove and in accordance with QUIKCOUP® pipe Preparation and Installation Instructions a. Figures for standard roll groove will be one half of the above values.

‡ Figures indicating max. end load refer to standard weight steel pipe with standard cut groove and in accordance with QUIKCOUP® pipe Preparations and Installation Instructions.