



007



007RT



75



75RT



07



71

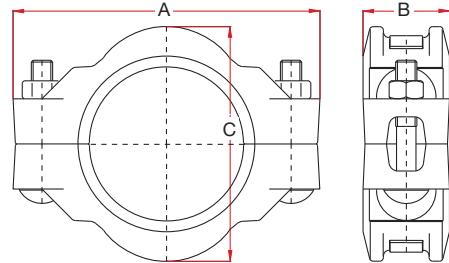
Style 07

Heavy Duty Flexible Coupling



Features

- Style 07 standard flexible coupling is designed to provide both flexibility and high joint reliability.
- For general piping applications of medium to high pressure services.
- Style 07 coupling is recommended for service up to 1000 psi. (69 bar).



	Nominal Size	Pipe Outside Dia.	Coupling Dimensions			Bolts			Max. End Load ‡ kg	Allow Pipe End Sep. §	Weight Kg.
			A	B	C	No.	Size	x Length			
inch	1 1/2	1.900	4 12/25	1 13/16	2 55/64	2	M10	x 57	643	0-1/16	0.89
mm	40	48.3	114.0	46.0	82.0					0-1.6	
inch	2	2.375	5 7/16	1 57/64	3 25/32	2	M12	x 76	1,004	0-1/16	1.50
mm	50	60.3	138.0	48.0	96.0					0-1.6	
inch	3 O.D.	3.000	5 3/4	1 57/64	4 11/32	2	M12	x 76	1,599	0-1/16	1.70
mm	65	76.1	146.0	48.0	110.0					0-1.6	
inch	3	3.500	6 1 1/16	1 57/64	5 1/8	2	M12	x 76	2,181	0-1/16	1.96
mm	80	88.9	170.0	48.0	130.0					0-1.6	
inch	4	4.500	8 1/4	2 13/64	6 3/8	2	M16	x 89	3,606	0-1/8	3.72
mm	100	114.3	210.0	56.0	162.0					0-3.2	
inch	5 1/2 O.D.	5.500	9 15/16	2 13/64	7 9/16	2	M20	x 120	5,387	0-1/8	5.24
mm	125	139.7	252.0	56.0	192.0					0-3.2	
inch	6	6.625	11 3/32	2 13/64	8 13/16	2	M20	x 120	7,820	0-1/8	6.04
mm	150	168.3	282.0	56.0	224.0					0-3.2	
inch	8	8.625	13 7/8	2 33/64	11 3/16	2	M22	x 140	13,252	0-1/8	9.57
mm	200	219.1	352.0	64.0	284.0					0-3.2	

Suitable for dry pipe systems for temperature down to - 40°C.

Note:

§ Figures indicating allowable pipe end separation refer to standard weight steel pipe with standard cut groove and in accordance with QUIKCOUP® pipe Preparation and Installation Instructions a. Figures for standard roll groove will be one half of the above values.

‡ Figures indicating max. end load refer to standard weight steel pipe with standard cut groove and in accordance with QUIKCOUP® pipe Preparations and Installation Instructions.