



170



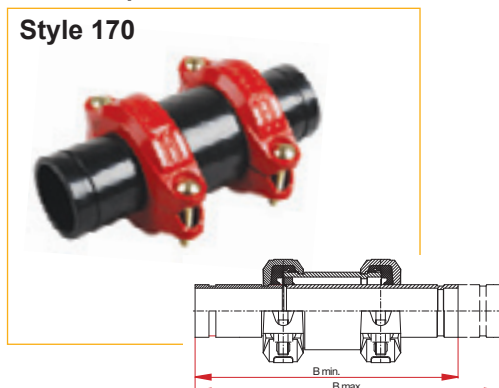
175

Style 170, 175

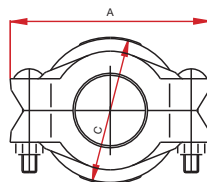


Telescop

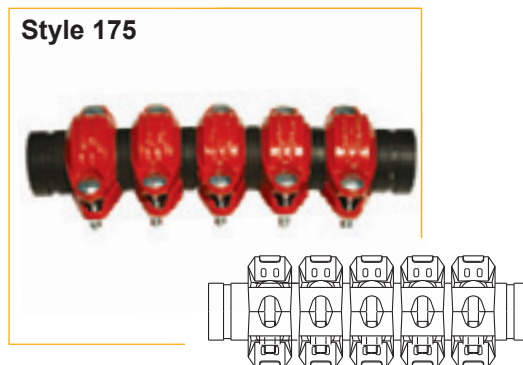
Style 170



- Style 170 is a slip-type expansion joint which provides up to 76 mm axial end movement.
- Style 170 accommodates expansion, contraction or both.
- Style 170 is supplied with grooved ends.



Style 175



- Expansion Joint Style 175 consists of several couplings style 75 and cut grooved machined short pipes segments.
- Provide thermal expansion and / or contraction, depended on the initial installed length. Working Temp. Ranges according to the used gasket type.
- Available sizes: 1 1/4" - 10".
Max. Working pressure: 24 Bar.

Specifications

	Nominal size	Pipe Outside Diam.	Max. working pressure		Max. available movment	Width A	Legth B		Height C	Approx. coupling weight kg
			psi	bar			Min.	Max.		
inch	2	2.375	350	24	3	6.38	11.88	14.88	4.65	8.6
mm	50	60.3								
inch	3	3.500	350	24	3	7.80	12.13	15.13	5.83	13.6
mm	80	88.9								
inch	4	3.000	350	24	3	9.69	14.13	17.13	7.09	18.4
mm	100	114.3								
inch	6	6.625	350	24	3	13.54	16.00	19.00	10.35	37.5
mm	150	168.3								