

Style 75

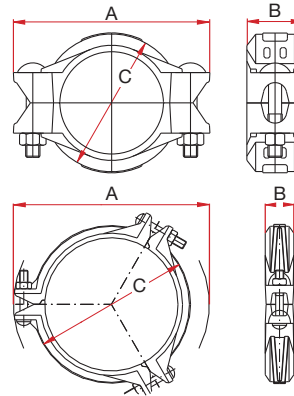
Lightweight Flexible Coupling



Features

- Flexible coupling provides linear movement, angular deflection and vibration isolation

- For general use (other than sprinkler systems) max. working pressure 500 psi. (35 bar).



14"-16" Sizes

	Nominal Size	Pipe Outside Dia.	Coupling Dimensions			Bolts			Max. End Load ‡ kg	Allow Pipe End Sep. §	Weight Kg.
			A	B	C	No.	Size	x Length			
inch	1 ¼	1.660	4 ¾	1 13/16	2 45/64	2	M10	x 57	230	0-1/8	0.68
mm	32	42.4	104.0	46.0	68.5					0-3.2	
inch	1 ½	1.900	4 ½	1 13/16	2 31/32	2	M10	x 57	299	0-1/8	0.83
mm	40	48.3	114.0	46.0	75.5					0-3.2	
inch	2	2.375	4 29/32	1 13/16	3 ½	2	M10	x 57	466	0-1/8	0.91
mm	50	60.3	125.0	46.0	89.0					0-3.2	
inch	2 ½	2.875	5 19/32	1 13/16	4	2	M10	x 57	683	0-1/8	1.05
mm	65	73.0	142.0	46.0	101.5					0-3.2	
inch	3 O.D.	3.000	5 21/32	1 13/16	4 ¾	2	M10	x 57	742	0-1/8	1.18
mm	65	76.1	144.0	46.0	103.5					0-3.2	
inch	3	3.500	6 ¾	1 13/16	4 35/64	2	M12	x 76	1,012	0-1/8	1.43
mm	80	88.9	162.0	46.0	115.5					0-3.2	
inch	4 ¼ O.D.	4.250	7 51/64	2	5 19/32	2	M12	x 76	1,494	0-1/4	1.60
mm	100	108.0	198.0	51.0	142.0					0-6.4	
inch	4	4.500	7 51/64	1 31/32	5 25/32	2	M12	x 76	1,673	0-1/4	2.00
mm	100	114.3	198.0	50.0	147.0					0-6.4	
inch	5 ¼ O.D.	5.250	9 ¾	2 1/16	6 25/32	2	M16	x 89	2,266	0-1/4	2.60
mm	125	133.0	238.0	52.5	172.0					0-6.4	
inch	5 ½ O.D.	5.500	9 43/64	2 3/64	7 3/32	2	M16	x 89	2,500	0-1/4	3.20
mm	125	139.7	245.5	52.0	180.0					0-6.4	
inch	6 ¼ O.D.	6.250	10 43/64	2 1/16	7 27/32	2	M16	x 89	3,238	0-1/4	3.50
mm	150	159.0	271.0	52.5	199.0					0-6.4	
inch	6 ½ O.D.	6.500	10 7/8	2 3/64	8 3/32	2	M16	x 89	3,491	0-1/4	3.86
mm	150	165.1	276.0	52.0	207.0					0-6.4	
inch	6	6.625	10 7/8	2 3/64	8 5/32	2	M16	x 89	3,628	0-1/4	3.86
mm	150	168.3	276.0	52.0	207.0					0-6.4	
inch	8	8.625	13 19/32	2 23/64	10 3/8	2	M20	x 120	6,149	0-1/4	6.37
mm	200	219.1	345.0	60.0	270.0					0-6.4	
inch	10	10.750	18 7/64	2 31/64	13 93/64	2	M22	x 181	7,201	0-1/4	13.4
mm	250	273.0	460.0	63.0	355.0					0-6.4	
inch	12	12.705	19 7/32	2 31/64	15 13/64	2	M22	x 181	10,136	0-1/4	15.3
mm	300	323.9	488.0	63.0	386.0					0-6.4	
inch	@ 14	14.000	20 7/16	2 51/64	16 3/8	3	M22	x 140	12,217	0-1/4	-
mm	350	355.6	519.0	75.0	416.0					0-6.4	
inch	@ 16	16.000	22 3/8	2 51/64	18 25/64	3	M22	x 140	15,957	0-1/4	-
mm	400	406.4	568.0	75.0	467.0					0-6.4	

Suitable for dry pipe systems for temperature down to - 40°C.

► Note:

§ Figures indicating allowable pipe end separation refer to standard weight steel pipe with standard cut groove and in accordance with QUIKCOUP® pipe Preparation and Installation Instructions a. Figures for standard roll groove will be one half of the above values.

‡ Figures indicating max. end load refer to standard weight steel pipe with standard cut groove and in accordance with QUIKCOUP® pipe Preparations and Installation Instructions.