

Style 75RT

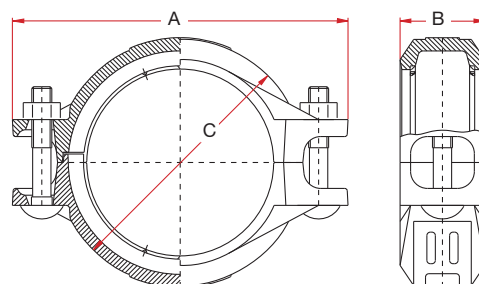


Heavy Duty
Flexible Coupling



Features

- Style 75RT Rigid coupling is optimal designed to perform rigid piping connection. Does not permit expansion/contraction
- For general use (other than sprinkler systems) max. working pressure 35 bar (500 Psi).
- Style 07 coupling is recommended for service up to 1000 psi. (69 bar).



	Nominal Size	Pipe Outside Dia.	Coupling Dimensions			Bolts			Max. End Load ‡ kg	Allow Pipe End Sep. §	Weight Kg.
			A	B	C	No.	Size	x Length			
inch	1 ¼	1.660	4 ¾/₃₂	1 1³/₁₆	2 4⁵/₆₄	2	M10	x 57	298	0.04	0.68
mm	32	42.4	104.0	46.0	68.5					0-1	
inch	1 ½	1.900	4 ½	1 1³/₁₆	2 3¹/₃₂	2	M10	x 57	386	0.04	0.83
mm	40	48.3	114.0	46.0	75.5					0-1	
inch	2	2.375	4 2⁹/₃₂	1 1³/₁₆	3 ½	2	M10	x 57	602	0.04	0.91
mm	50	60.3	125.0	46.0	89.0					0-1	
inch	3 O.D.	3.000	5 2¹/₂	1 1³/₁₆	4 ¾/₃₂	2	M10	x 57	959	0.04	1.18
mm	65	76.1	144.0	46.0	103.5					0-1	
inch	3	3.500	6 ¾	1 1³/₁₆	4 3⁹/₆₄	2	M12	x 76	1,309	0.04	1.43
mm	80	88.9	162.0	46.0	115.5					0-1	
inch	4	4.500	7 5¹/₆₄	1 3¹/₃₂	5 2⁵/₃₂	2	M12	x 76	2,164	0.04	2.00
mm	100	114.3	198.0	50.0	147.0					0-1	
inch	5 ½ O.D.	5.500	9 4³/₆₄	2 ¾/₆₄	7 ¾/₃₂	2	M16	x 89	3,232	0.12	3.20
mm	125	139.7	245.5	52.0	180.0					0-3	
inch	6 ½ O.D.	6.500	10 5³/₆₄	2 ¾/₆₄	8 ¾/₃₂	2	M16	x 89	4,515	0.12	3.86
mm	150	165.1	275.0	52.0	207.0					0-3	
inch	6	6.625	10 5³/₆₄	2 ¾/₆₄	8 5/₃₂	2	M16	x 89	4,692	0.12	3.86
mm	150	168.3	275.0	52.0	207.0					0-3	
inch	8	8.625	13 1⁹/₃₂	2 2³/₆₄	10 5/₈	2	M20	x 120	7,951	0.12	6.37
mm	200	219.1	345.0	60.0	270.0					0-3	

Suitable for dry pipe systems for temperature down to - 40°C.

► Note:

§ Figures indicating allowable pipe end separation refer to standard weight steel pipe with standard cut groove and in accordance with QUIKCOUP® pipe Preparation and Installation Instructions a. Figures for standard roll groove will be one half of the above values.

‡ Figures indicating max. end load refer to standard weight steel pipe with standard cut groove and in accordance with QUIKCOUP® pipe Preparations and Installation Instructions.